

Winter 2005

OMA BOARD OF DIRECTORS

President
Irene Zenev '06, 541.929.6230, exhibits@bentoncountymuseum.org
Curator, Benton County Museum, Philomath

Vice President
Julie Reese '06, 541.276.0012, director@heritagestationmuseum.org
Executive Director, Umatilla County Historical Society Museum, Pendleton

Past President
Loretta Harrison '06, 541.265.7509, coasthistory@newportnet.com
Executive Director, Oregon Coast History Center, Newport

Secretary
Connie Nice '07, 541.386.6772, hrchm@gorge.net
Coordinator, Hood River Museum, Hood River

Treasurer
Richard Engeman '06, 503.306.5247, richarde@OHS.org
Public Historian, Oregon Historical Society, Portland

Tracy Buckley '07, 503.557.5359, tracy.buckley@or.ngb.army.mil
Curator, Oregon Military Museum

Katherine Huit '06, 503.434.4123, katherine.huit@sprucegoose.org
Director of Collections, Evergreen Aviation Museum, McMinnville

Kyle Jansson '07, 503.986.0673, heritage.info@state.or.us
Coordinator, Oregon Heritage Commission, Salem

MJ Koreiva '06, 541.267.3901, mjkoreiva@coosart.org
Executive Director, Coos Art Museum, Coos Bay

Ray Vandiver, Ph.D., '06, 503.797.4540, rvandiver@omsu.edu
Vice President of Exhibits, Oregon Museum of Science and Industry, Portland

John Enders '06, 541.773.6536, director@sohs.org
Executive Director, Southern Oregon Historical Society, Medford

It seems that every time OMA chooses to meet on the Oregon coast, the weather is perfect. Such was the case in Gold Beach, the setting for our annual meeting in October.

I would like to thank our hosts, the Curry County Historical Society, for making us feel so welcome. I would also like to thank MJ Koreiva, Ross Sutherland, PJ Estlund, and Julie Curtis for their presentations about branding and marketing-necessary information for all museums and historical societies today.

The Board of Directors has appointed John Enders, Director of the Southern Oregon Historical Society, to fill a board vacancy left by his colleague, Steve Wyatt, who has left Oregon to move to Salt Lake City, Utah with his wife. We will all miss Steve, but welcome John as our southern Oregon representative on the Board. I would also like to welcome Tracy Buckley to the Board for her new term of office. Tracy is a Curator at the Oregon Military Museum and brings a wealth of experience and knowledge to the Board.

I am proud of the dedication and commitment of all of our volunteer Board members; they are very busy people who make time to serve the members of OMA and I appreciate each and every one of them.

Kyle Jansson of the Oregon Heritage Commission is working on the revamping of the Museum Grant program. Since the 1960s, Oregon has appropriated limited funding to benefit its museums. Formerly divided equally among all applicants, this grant fund will now be awarded through a competitive process. For any questions about the status of the Museum grant program changes, please contact Kyle.

We look forward to our next meeting in Eugene in March, co-hosted by the Lane County Historical Museum and the Springfield Museum. OMA hasn't met in Eugene in several years, and much has changed in the Eugene museum world of late. Be sure to "save the date" -March 5 and 6, 2006-to attend our next gathering in Eugene. I look forward to seeing you all there.

Sincerely,
Irene Zenev, President

OMA DISPATCH
Post Office Box 1718, Portland, OR 97207 www.oregon-museums.org

The newsletter of the Oregon Museums Association, *Dispatch*, is published four times a year: February, May, September and December. Oregon Museums Association is a statewide membership organization serving the needs of museums and related institutions, large and small, across Oregon. OMA holds meetings and workshops around the state throughout the year, advocates for the interests of its members in legislative and other matters, publishes a bi-annual *Guide To Oregon Museums*, and a periodic directory of all known museums in the state. Historic houses, aquaria, interpretive centers and sites, zoos, heritage sites - all are potential members of OMA. OMA is a nonprofit organization; contributions are tax deductible. OMA provides scholarships to members for professional development. OMA is an affiliated state organization of the Western Museums Association. Send news about your museum to Katherine Huit (katherine.huit@sprucegoose.org), or Irene Zenev (ilzenev@aol.com). Digital files are preferred, but hard copy can be sent to Katherine Huit, 7020 SW Lebold Road, McMinnville, OR 97128.

Editor: Katherine Huit
Editorial Board: Connie Nice, Alice Parman, Julie Reese, and Irene Zenev.

Spring Issue Deadline: February 3, 2006

Mark Your Calendar!

UPCOMING 2006 OMA MEETINGS

January 23, 2006: Board Meeting
Marion County Historical Museum

March 5 - 6, 2006
Lane County Historical Society, Eugene

June 25 - 26, 2006
Ashland Science Works, Ashland

October 8 - 9, 2006
Hood River Museum, Hood River

OMA Membership

Don't forget to renew your membership by December 31st! Not a member? Membership benefits include discounts to attend informative meetings held three times a year at different locations around the state, and *Dispatch*, OMA's quarterly newsletter. For further information see page 11, inside.

Thank You for Your Continued Support!

Western Museums Association Annual Conference Recap

Until recently, the by-laws of the Western Museums Association designated the OMA President as Oregon's representative on the WMA board of directors. Under this aegis, I was privileged to attend this year's WMA January board meeting and September's annual conference in Pasadena, California.

Inside This Issue	
President's Message	1
Feature Article	1
Fall Meeting Minutes	3
Government Relations	4
Resources and Training	5
Position Openings	6
Exhibits and Events	6
News From Around Oregon	8
Membership	11
Board Members / Meetings Dates	12

Having attended several WMA conferences in the past as a "lay" person, I was keenly aware of the quality of the meeting, both organizationally and in the presentations. But, until I stepped "behind the scenes" as a new Board member I did not realize the amount of expertise the staff and board of WMA possesses.

Over 650 people attended this year's conference in Pasadena (only about 10 from Oregon). The conference theme complemented the backdrop of the famous Rose Parade location, which was "A Rose By Any Other Name: Integrity, Mission and Authenticity". The sessions explored how the entertainment industry, educational and academic institutions, business and community all influence museums' core values. Questions about how the museum community responds to society's need for entertainment and increased economic accountability, increased revenues and expansion of facilities, and greater demand for public programming sometimes occurs at the expense of staff, collections care, and research. It has become a balancing act for museum staff and boards throughout the country and will most likely continue into the future. The question of how we survive as cultural institutions is always on the table.

Of the dozens of sessions offered at the conference, I was able to attend several in addition to my duties as a Board member. I served on the Auction Committee, which raises money for the Wanda Chin Scholarship Fund.

(Continued on page 2)

If you are interested in submitting a 500 word article of professional, scholarly or political relevance to Oregon museums and museum professionals please contact the Editor. All submissions will be screened by the Editorial Board. Deadline for the Spring 2006 issue is January 10.

These funds help people from all over the West attend the conference. This year, our own MJ Koreiva, Director of Coos Art Museum, received a partial scholarship to attend the meeting.

The Auction Committee solicited items from wineries, museum shops, vendors and others for a combination silent and live event auction held during the conference. Oregon's David Porter was the successful bidder on an iPod at the live auction held at the California Academy of Sciences evening event. The auctioneer, Michael Hammond, former Oregon resident, is now living and working in Palm Springs, California. This combination auction raised over \$7,000 for the Wanda Chin Scholarship fund. Congratulations to Sarah Kennington of the Fowler Museum of UCLA, who chaired the auction committee.

In addition to helping to organize and display the auction items, I also assisted staff as a session monitor.

I attended the "Working Group for Museum Associations" workshop during the pre-conference activities. Representatives from Washington, Hawaii, Arizona, Idaho and British Columbia attended. It was interesting to learn that our museums association meets more often and for far less money than other state organizations. Most states hold annual conferences. The Canadians are state-supported and employ full-time staff, produce full color publications, and generate tens of thousands of dollars of income; quite a contrast with OMA.

Another interesting session dealt with the "Art of Converting Museum Visitors into Members." Recruiting members for your organization is an on-going job. Every front desk volunteer or staff person-or whoever interacts with your visitors-should be promoting membership in your organization. Benefits of membership should be communicated to visitors so they feel compelled to "become a member today" and receive a discount on admission, in the museum store, a newsletter or other benefit. Staff and volunteer training is vital to this process, and some museums encourage front line employees with incentive programs.

A timely topic, "Presents (sic) on the Web: Putting Your Museum Gift Store Online" was full of information about how the world of e-commerce is affecting museum stores. As earned revenue becomes an important contribution to any institutions' bottom line, store revenues can be increased by reaching a wider audience on the web. The panel of store specialists discussed the pros and cons of different internet store service providers, how much staff time is required for set up, maintenance, and fulfillment of orders, and how to use volunteers in the process. Website maintenance is a great way to recruit younger volunteers with computer skills, and bring them and younger audiences into your institution at the same time.

A fascinating session on "Expansion and Renovation: Challenges for the Expanding Museum" touched on issues that many in Oregon are facing today, including my own institution. Major expansions and additions present difficulties and challenges for the ongoing operation of any museum. The panelists talked about their experiences emerging from a successful construction project. The story turned out to be a cautionary tale, stressing that building projects brought responsibilities and stresses on staff not predicted at the outset. One museum chose to remain open during their renovation, while the other chose to close to the public and relocate their collections out of harm's way. Each presenter talked about the importance of a project manager to advocate for the museum during the construction process, and have that manager oversee the coordination of the contractor and the sub-contractors. In each case, budget overruns were common. It was beneficial to hear first hand experience of museum staff in these projects.

The best part of any conference for me is visiting other museums. Conference tours included Pasadena and Los Angeles area attractions including Norton Simon Museum, Gamble House, Pacific Asia Museum, California Science Center, Museum of Contemporary Art,

Museum Photographic

Digital Enlargements
8" x 10" ~ Any Size
B/W • Brown • Sepia

Rick Regan (503) 238-2496
museumphotographic.com

Japanese American National Museum, California African American Museum and the Huntington Library. I also visited the Pasadena Museum of Contemporary California Art.

A final word about the recent changes to the Western Museums Association by-laws: no longer will automatic appointments be made through state museums associations and professional standing committees for board members. A nominations committee will solicit participation from museum professionals and volunteers in western states and affiliated organizations. Hopefully this change in the by-laws will help to fill some chronically empty board positions. Oregon, I am happy to report, has always been well-represented in the WMA, because of OMA's support for attendance. David Porter and Dan Crandall continue to serve on the board in addition to my service, which I hope will continue through next year.

I encourage all Oregon museum professionals and volunteers to attend next year's conference in Boise, Idaho. We will have more information in upcoming editions of the Dispatch. And, remember scholarships are available to underwrite conference fees, travel and lodging. If you need more information about Western Museums Association, you can log on to www.westmuse.org.

Irene Zenev is Curator of the Benton County Historical Museum in Philomath, and currently serves as OMA's President.



Spring Meeting in Eugene

Watch this space next issue for the Spring Meeting Agenda. Join other OMA members for a fun and informative gathering in Eugene hosted by the Lane County Historical Society.

Membership

As 2005 comes to an end we look back over the year's wonderful member educational programs and workshops hosted by the Curry County Museum in Gold Beach, Heritage Station in Pendleton, and the World Forestry Center in Portland. Those who purchased a 2005-2006 membership can look forward to another year of great programs - plus continued presence through December 2006 in the Oregon Museums Guide Book. 2006 promises more exciting activity, starting with the spring meeting hosted by the Lane County Historical Museum, on March 5 and 6, in Eugene.

OMA's membership year begins January 1st. Members receive meeting registration fee discounts, behind the scene tours at hosting museums, and a quarterly copy of Dispatch. Show your support for OMA by joining as an individual, institution, or corporation!

2006 OREGON MUSEUMS ASSOCIATION
MEMBERSHIP APPLICATION

NEW	RENEW	2006	2007
TODAY'S DATE _____		DATE REC'D _____	
Individual		\$15.00	
Student / Volunteer		\$10.00	
Institutional (operating budget less than \$50,000)		\$25.00	
(\$50,000 - \$200,000)		\$35.00	
(\$200,000 and above)		\$45.00	
Corporate / Business		\$75.00	
First name _____		Last name _____	
Title _____			
Museum name _____			
Organization name (if different) _____			
Mailing address _____			
City _____		State _____	Zip _____
Site address (if different) _____			
City _____		State _____	Zip _____
Work phone _____		Home phone _____	
Fax _____		Cell phone _____	
E-Mail _____			
Website _____			
Please send completed membership application and check (payable to Oregon Museums Association or OMA) to: Oregon Museums Association, PO Box 1718, Portland, OR 97207-1718. Thank you.			
All OMA memberships are on a calendar year and expire on December 31st. If you have questions, please contact Ray Vandiver, Membership Chair, 503.797.4540 or rvandiver@omsi.edu .			
Thank you!			

PERFORMANCE MANAGEMENT SERVICE LAUNCHED

The American Association for State and Local History recently launched its new Performance Management program. Performance Management helps museums improve their public performance and perception by measuring and analyzing visitor satisfaction with the institution's programs and services. Information from the final report can be used as support data in grant applications and funding requests, and in PR and marketing, staff goals, and strategic planning.

Performance Management is similar to the MAP and CAP programs except that where they are use peer review to assess and recommend change, Performance Management focuses on change based upon visitor satisfaction and opinions. Participation in Performance Management is almost a full year project. The program, developed in partnership with the Center for Nonprofit Management of Nashville, provides services including a tested survey instrument; training workshops and materials to help launch a survey; professional tabulation and analysis; workshops and resource materials that help museums incorporate survey results into museum strategic planning and fund raising. Benchmarking information collected from museums across the country helps museums compare survey results with other institutions of similar size and scope.

For more information, museums can contact Cherie Cook at 316.721.9956 or at cook@aaslh.org. More information is also available at <http://www.aaslh.org/perfmanagement.htm>.

CITY OF PORTLAND, OREGON ELECTRONIC ARCHIVES AVAILABLE ON THE INTERNET

City of Portland Auditor Gary Blackmer recently announced the release of Efiles - a web-based search tool that makes thousands of electronic images of important city records available to the public. Efiles houses over 30,000 electronic documents, including all City Council Ordinances from the mid-80s to the present, as well as photographic and documentary images from the City's archival collection. Besides the electronic images, Efiles also contains over one million catalog entries covering City operations and history dating back to 1851. The electronic documents can be immediately viewed or downloaded. The catalog entries represent hard copy records stored at the City's Stanley Parr Archives and Records Center (SPARC). Using Efiles, citizens can contact archives staff to arrange access to the records stored at SPARC.

Efiles is a dynamic system with both electronic and catalog records being added daily. Researchers, students and the general public will find Efiles a helpful tool to learn about and keep up with Portland city government's current activities and rich history. Visit Efiles at <http://www.portlandonline.com/efiles>. Type in 'testsearch' to see the variety of record-types in the system.

COLUMBIA RIVER FELLOWSHIP FUNDS AVAILABLE

The Center for Columbia River History announces the James B. Castles Fellowship to encourage original scholarly research that contributes to public understanding of the history of the Columbia River Basin. The \$3,000 Fellowship is open to graduate students, professional historians and independent scholars. CCRH encourages proposals from diverse historical perspectives, including social, ethnic, political, cultural and environmental approaches.

Fellows will be in residence at the Center for Columbia River History in Portland-Vancouver for four weeks during the granting year (June 1, 2006-Aug. 31, 2007). Materials, including recommendation letters, should be received by received by March 1.

For more information, visit www.ccrh.org, email info@ccrh.org

or call 360-258-3289.

LIBRARY OF CONGRESS LOGS MILLIONTH ONLINE IMAGE

The Library of Congress Prints & Photographs Division is celebrating a new landmark: one million images from its collections are now available in digital form online. A search of its online catalog with the word "Oregon" reveals more than 3,000 collections or images.

Digital images from the Prints & Photographs Division are available through the Prints & Photographs Online Catalog at <http://www.loc.gov/rr/print/catalog.html>. The catalog provides access through group or item records to about 65 percent of the division's holdings, a portion of which are accompanied by digital images. The records represent the variety of materials held in the nearly 14 million items in the division's collections.. In addition to photographs, these include fine and popular prints and drawings, posters, and architectural and engineering drawings. The collections are international in scope and are particularly rich in materials produced in, or documenting the history of, the United States and the lives, interests and achievements of the American people.

For questions about the Prints and Photographs Online Catalog or the holdings and services of the Prints and Photographs Division, consult the Ask a Librarian service by visiting <http://www.loc.gov/rr/askalib/ask-print.html>.

SYMPOSIUM, ARCHAEOLOGICAL FILM EVENT SET FOR MARCH

The Archaeology Channel's International Film and Video Festival will take place March 7-11 at the McDonald Theatre in Eugene.

The keynote speaker will be Brian Fagan, an archaeological writer who, serves as archaeological consultant to National Geographic Society, Time/Life, Encyclopedia Britannica, Microsoft Encarta, and other organizations. Associated activities will include guided trips to nearby archaeological sites, a BLM Project Archaeology workshop for teachers, the Symposium on Heritage Film, children's activities, and other hands-on opportunities.

For more information contact filmfest@archaeologychannel.org or vist <http://www.archaeologychannel.org/content/TACfestival.shtml>.

EVERGREEN AVIATION MUSEUM PARTNERS WITH EMBRY RIDDLE UNIVERSITY

Beginning January 9, 2006 The Captain Michael King Smith Educational Institute will begin offering undergraduate courses for Embry-Riddle Aeronautical University at the Evergreen Aviation Museum site.

Embry-Riddle Aeronautical University is the world's largest independent aeronautical university, with a student body of 30,000 from all 50 states and more than 100 nations. The McMinnville Embry-Riddle campus will offer undergraduate and graduate degrees on-site at Evergreen Aviation Museum and online courses for those students unable to attend classes at the museum.

The initial degree offering will include Bachelor of Science in Professional Aeronautics, Bachelor of Science in Technical Management and Master of Aeronautical Science. The management program will award credit for prior training or experience, including work experience or military background.

For more information, or to register for McMinnville classes, contact Embry-Riddle at 503-288-8690 or online at www.erau.edu/portland.

October 10, 2005 - Curry County Museum, Gold Beach

Call to Order: Chair, Irene called the meeting to order at 9:00 a.m. She opened the meeting by reading Article I of the OMA bylaws regarding our name and purpose.

Minutes: Julie Reese moved and Bob Hart seconded to approve June's minutes as published in The Dispatch.

Treasurer's Report: Irene presented in Richard Engeman's absence.

Savings Account Current Balance	\$12,900.00
Checking Account Current Balance	\$ 6,590.33
Minus outstanding and encumbered amounts	
Current Working Balance	\$ 5,082.27

Elections: Ballot was presented in the *Dispatch*. Bob Hart moved, Kris Redmond seconded to approve the ballot as presented and close nominations. Approved. The ballot was then approved by members as presented.

Program Committee Report: ·Upcoming meetings include:

- March 2006 - Eugene / Springfield - Topic "Transition and Evolution: Stuck on the on-ramp".
- June 2006 - Ashland - Topic: Fundraising
- October 2006 - Hood River: Topic: "It only takes a spark to get a project going"
- March 2007 - Salem - Topic: TBA

Marketing Committee: · The guide book project will begin again in the fall of 2007. Extra copies can be ordered through Irene in Philomath. The Winter 2005 *Dispatch*, which is published 4 times per year, will employ an informational / educational focus high-lighting topics presented at the recent WMA conference in Pasadena, California. The next WMA meeting will be held in Boise, Idaho in 2007. All members are encouraged to plan ahead and attend. Please remember scholarships are available to assist with registration costs.

Government Relations Committee: · Kyle gave a brief update on the Sesquicentennial Project to celebrate Oregon's 150th birthday. The Heritage Commission and the Governors Office are working together on this project.

Recapping the recent Heritage Commission Grant cycle, Kyle reported that 46 proposals were received with over \$600,000 in requests. The grant is now in a six week process of reviews before award winners are announced.

Kyle told of the proposed changes in the Museum Grant program. Changes reflect a desire by state legislators that the program still encourage smaller museums to apply and access funding. Kyle requested all members present to review drafts of changes and get back to him by November 30, 2005 with any changes or contact james.hamrick@state.or.us

The "Preserving Oregon" grant cycle is now open.

Plan ahead to attend the next Heritage Conference to be held in Coos Bay on May 18 - 20, 2006.

Kyle also gave an update on the Oregon Cultural Trust. The Oregon Heritage Commission is working with OCT and the state Historic Preservation office to establish a heritage technical support organization to assist with input and support to museum and heritage organizations and historical societies. Kyle introduced Don Ivy from the Oregon Heritage Commission. Further information will be presented on this as it develops.

Announcements: A special exhibit is planned to honor Oregon Archives Week entitled "Landscapes of Discovery". This will be at the McMennamins Grand Lodge in Forest Grove with a reception planned for October 15th.

- Bob Hart announced publication of a photo collection book in November of this year.
- The Gresham Historical Society has 12 vintage light fixtures that need a new home. Contact them to make an offer.
- Benton County Historical Society has published a book on the Calapooia that will be available next week.
- Hood River County Historical Museum together with The Fruit Foundation Historical Society opened a new exhibit in Hood River honoring fruit heritage. It is entitled "Remembering Our Roots".
- Irene from Benton County drew attention to their current on-line auction. Check it out as a great potential tool for fundraising.
- Kyle mentioned that the Oregon Century Farm and Ranch will be launching a new program to honor agricultural farms/ranches that have been in existence for 150+ years. He is asking for assistance from members in locating qualifying entities that might be in your area.

Meeting was adjourned at 9:50.

Respectfully submitted by,
Connie Nice
OMA Secretary

NATIONAL ACTIVITY

Heritage Health Index Finds Millions of Precious Artifacts at Risk In U.S. Collections
Washington, D.C. - The first comprehensive survey ever to assess the condition of U.S. collections shows the need for immediate action to prevent the loss of millions of irreplaceable artifacts held in public trust. Improper storage conditions and the lack of realistic disaster planning top the list of chronic problems.

Heritage Preservation, the country's leading conservation advocate, in partnership with the Institute of Museum and Library Services (IMLS), a federal agency, details these and other findings in *A Public Trust at Risk: The Heritage Health Index Report* on the State of America's Collections.

- Key findings of the report include:
- 80 percent of U.S. collecting institutions do not have an emergency plan to protect collections with staff trained to carry it out.
 - 65 percent of collecting institutions have experienced damage to collections due to improper storage.
 - 190 million objects are in urgent need of conservation treatment.
 - The most urgent need at U.S. collecting institutions is environmental control.

"*A Public Trust at Risk* concludes that only very few collecting institutions in the U.S. have enough funding to ensure the safety of their collections. Heritage Preservation urges private donors and public officials nationwide to lead new efforts to preserve the nation's collected heritage, in light of this and other of the report's findings," says Debra Hess Norris, Chairperson of Heritage Preservation and Chair and Professor, Art Conservation Program, University of Delaware/Winterthur.

The Heritage Health Index survey is unique in examining the state of preservation across the entire spectrum of collecting institutions, large and small, from internationally renowned art museums and research libraries to local historical societies and specialized archives.

The report chronicles the preservation needs of 4.8 billion artifacts held in U.S. collections, among them rare books, manuscripts, photographs, prints, maps, films, videos, sound recordings, digital materials, sculptures, paintings, drawings, textiles, flags, airplanes, furniture, toys, shells, animal and plant specimens, fossils, and prehistoric pottery shards.

"I cannot think of an area of public life supported by as little reliable data as that of our nation's collections-up until today," says Lawrence L. Reger, President of Heritage Preservation. "Now, with an accurate picture resulting from the Heritage Health Index, leaders in the private and public sectors can make better informed decisions about issues of stewardship."

The product of extensive planning and a year-long implementation process, *A Public Trust at Risk: The Heritage Health Index Report on the State of America's Collections* was made possible by major support from the The Institute of Museum and Library Services (IMLS) and the Getty Foundation, with additional generous grants from The Henry Luce Foundation, The Samuel H. Kress Foundation, The Bay and Paul Foundations, The Peck Stacpoole Foundation, and The Gladys Krieble Delmas Foundation.

"Collections are the foundation of everything that takes place in museums, libraries and archives," says Mary Chute, acting director of the IMLS. "They are vitally important, in part because objects take on unanticipated and surprising meanings over time. For instance, a botanical specimen we know little about today may yield clues to the cure of a disease tomorrow."

Environment is the Worst Enemy
The Heritage Health Index finds that the conditions in which objects are stored often pose the chief threat to collections. Data shows that collections in a quarter of American collecting insti-

tutions are vulnerable to all three of the greatest threats to delicate objects-fluctuations in temperature, light, and humidity-because these institutions report having no environmental controls to protect collections.

Sixty-five percent of the collecting institutions in the country reported that parts of their collections have been damaged in the past due to improper storage. Nearly as many reported that they store a large part of their collections in areas that are overcrowded and therefore susceptible to damage.

A Public Trust at Risk, shows that millions of historic documents, photographs, and other objects are kept in areas where they are vulnerable to flooding, over-heating, light, and infestation by insects. Many are crowded onto shelves, where condition problems go undetected. Others are stored in acidic containers and, thus, vulnerable to a slow decay brought about by leaching acids and other chemicals.

Says Reger: "The Heritage Health Index was conducted during one of the great waves of museum building and expansion in U.S. history. Yet the data shows that we still have a long way to go to provide safe facilities for collections, not just in museums, but in libraries, historical societies, and other collecting institutions. As trustees, government officials, and institutional leaders plan capital projects, we urge them to ensure that the basic needs of collections are addressed."

Collections Vulnerable to Swift and Catastrophic Loss
Emergencies are inevitable facts of life, from major disasters like Hurricane Katrina to more quotidian occurrences like leaking water pipes. Yet *A Public Trust at Risk* found that fully 80 percent of American collecting institutions do not have an emergency plan with staff members trained to carry it out. Extrapolating from that statistic, Heritage Preservation estimates that more than 2.6 billion objects are at risk from disaster striking their home institutions.

Staffing and Funding
The survey found that 80 percent of institutions nationwide have no paid staff dedicated to collections care. Without trained personnel, it is difficult to address many of problems identified by the survey.

"Staffing need not remain the problem it is today. Not every collection requires a full-time professional conservator, but staff can be assigned and trained to oversee the basics of caring for holdings," concludes Chute.

Underlying the pervasive problem of staffing-and, indeed, all the problems cited in the Heritage Health Index-is the report's finding that only 40 percent of organizations in the U.S. regularly allocate funds for care of their collections.

"Care of collections need not be a drain on resources. Conservation is a subject that can engage the public, encourage participation in an institution, and attract financial support," says Chute of the IMLS. The Smithsonian American Art Museum discovered that its audience was curious about conservation through a series of surveys and focus groups. Now, when the museum reopens in Summer 2006, its Lunder Conservation Center will offer visitors a behind-the-scenes look at how art is conserved.

To read *A Public at Risk: The Heritage Health Index Report on the State of America's Collections* in its entirety visit www.heritagehealthindex.org to read.

STATE LEGISLATIVE ACTIVITY
Museum Grant Program Revisions Underway
Watch this space next quarter for news about the new Oregon Museum Grant Program. The Oregon Heritage Commission, with assistance from OMA and the Oregon Historical Society, is drafting an Oregon administrative rule for this new competitive program, which replaces the 40-year-old annual entitlement program. The Legislature approved the change in programs earlier this year.

Once the OAR is finished, the organizations will then work together to create a new application. That application should be complete and available to museums by February. (Continued on page 5)

Earn credit for culture.



Since 2002, Oregonians have contributed over \$5.3 million to the Oregon Cultural Trust to help the arts, heritage and the humanities thrive. The State of Oregon has thanked them with a 100% tax credit for their gift.

Add your support for Oregon's culture. Make a gift to any cultural nonprofit in Oregon. Then, make a matching gift to the Oregon Cultural Trust and claim a 100% tax credit. It's that simple.

Learn more or donate online at www.culturaltrust.org.

Oregon
Cultural
Trust

Students at Oregon College of Art & Craft are working hard and learning through their training in Cedar Burning under the supervision of Professor Jennifer Pugh.

OREGON TOURISM NUMBERS INCREASE IN 2005

The Oregon Tourism Commission reports strong statewide lodging trends in Oregon for the first seven months (January-July) of 2005. Occupancy rates are averaging 4.3 percent ahead of the same period a year ago at 58.3 percent. To learn more about the state's tourism industry, visit <http://emailer.emailroi.com/reader.ice?DJYL5457168701&heritage.info&501>

THE HIGH DESERT MUSEUM WELCOMES ITS NEW LYNX

The High Desert Museum has a new big cat -- a lynx. Visitors can get close-up encounters with the lynx at 11:15 a.m. every Wednesday and Sunday, and enter a contest to name the lynx. During the encounters, visitors will be able to get within about five feet of this fully grown lynx -- close enough to see him play, and see his beautiful spotted fur, tufted ears, golden eyes and large, furry paws. Museum wildlife experts accompany the lynx during the encounters and tell visitors about him.

Believed to have been an abandoned pet, the lynx is about 45 pounds and about 3-1/2 feet, from the tip of his pink nose to the end of his furry, black-tipped tail.

A hiker found him on a trail at Castle Crags State Park in Northern California in August. Local authorities spent an entire afternoon using a pound of roast beef to coax him into a bear cage. It then took authorities about three hours to carry the caged lynx off the trail. They gave him to U.S. Forest Service officials, and the Museum accepted the lynx about a week later.

Museum wildlife staff believe the lynx is a hybrid of Canadian lynx, bred with either a Siberian or Eurasian lynx. Wildlife staff notes that because the lynx is a wild animal, the animal encounter schedule is subject to change without notice.

LYNX NAMING CONTEST DETAILS

Visitors can enter the naming contest at the museum, or online at www.highdesertmuseum.org, by clicking on the "name the lynx" link on the home page by 5 p.m., December 27. The winning entry will be announced at 11 a.m., December 28. The winner will receive a behind-the-scenes wildlife tour and an 8"x10" photograph of the lynx. For further information, please call Phone: (541) 382-4754 or visit www.highdesertmuseum.org.

END OF THE OREGON TRAIL INTERPRETIVE CENTER GARNERS "BEST OF THE WEST" HONORS

True West Magazine named the End of the Oregon Trail Interpretive Center the "Best Museum" in Oregon in its fourth annual "Best of the West" competition. The Interpretive Center also garnered 'readers' choice' award.

To learn more about the End of the Oregon Trail Interpretive Center and other sites in the Oregon City area, visit HistoricOregonCity.com

NATIONAL REGISTER ADDS 11 BRIDGES ALONG WITH MANY OTHER OREGON SITES

The State Historic Preservation Office has announced that 11 Oregon coastal highway bridges have been listed in the National Register of Historic Places. Nominated by the Oregon Department of Transportation and approved by the governor-appointed State Advisory Committee on Historic Preservation, the bridges were grouped in a multiple property submission recognizing the work of Oregon highway engineer Conde B. McCullough. McCullough served as the Oregon Highway Department's bridge engineer from 1919-1935. He is credited for the design and construction of more than 160 bridges, including most of the bridges on the Oregon coast.

The National Park Service, which maintains the register as the official list of the nation's cultural resources worthy of preser-

vation, entered the bridges under the official heading "C.B. McCullough Major Oregon Coast Highway Bridges, 1927-1936." The bridges, as officially listed, are: Coos Bay Bridge; Rogue River Bridge; Umpqua River Bridge; Big Creek Bridge; Cape Creek Bridge; Siuslaw River Bridge; Ten Mile Creek Bridge; Depoe Bay Bridge; Rocky Creek Bridge; Yaquina Bay Bridge; and Wilson River Bridge.

Other sites listed include a North Bend hotel, a farm in Clackamas County, a farmstead in Columbia City, the Lowell Grange, and buildings and houses in Portland, Forest Grove and Eugene.

The National Register of Historic Places was created under the authority of the National Historic Preservation Act of 1966 as a listing of districts, sites, archaeological sites, buildings, structures, and objects of national, state, and local significance. A brief explanation of the National Register nomination process and the benefits available to private property owners is available, upon request, from SHPO, 725 Summer Street NE, Suite C, Salem, OR 97301-1271, or at www.hcd.state.or.us (select "National Register").

MUSEUM BOARD HONORS ADMINISTRATOR

Jerry Ostermiller, who has served as executive director of the Columbia River Maritime Museum in Astoria since 1989, was elected museum president Nov. 18 at the museum's 43rd annual meeting. The Columbia River Maritime Museum is a private non-profit institution that employs a staff of 23 in a modern 47,000 square foot building on a thirteen-acre campus. The museum was the first nationally accredited maritime museum on the West Coast and is supported entirely by private donations. In 2002, Ostermiller completed a \$6,500,000 remodel of the Columbia River Maritime Museum, which showcases extraordinary exhibits interpreting the maritime history of the Columbia River.

With more than 25 years of museum administration experience, he has served as an administrator for a number of major programs. Currently, Mr. Ostermiller serves two national organizations; he is immediate past president of the Council of American Maritime Museums, and is a member of the board of the United States Lifesaving Service Heritage Association. Ostermiller has been featured in numerous documentaries for the History Channel, the Discovery Channel, The National Geographic Society and the Learning Channel, and served as a ship-board lecturer for Lindblad Special Expeditions and the Cunard Line's flag ship, the Queen Mary 2. As a consultant, Ostermiller performs workshops and scoping sessions for museums and interpretive centers throughout the United States and Canada. His commitment to develop non-profit boards and facilitate planning strategies for museums resulted in his being a founding member of the Pacific Northwest Maritime Heritage Council, and an advisor to the planning team for the proposed new National Coast Guard Museum to be constructed in New London, Connecticut.

In 1997 Ostermiller received the "Meritorious Public Service Medal" from the Commandant of the U.S. Coast Guard and in 2002 the Foundation for Coast Guard History presented him with its "Outstanding Leadership Award." In 2003, he received an appointment by the commandant of the United States Army War College to participate in the 2003 National Security Seminar at Carlisle, Penn. He has served as a member of the Oregon Heritage Commission, and is a member of the Selection Committee for the National Maritime Hall of Fame.

JENSEN MUSEUM HIRES CURATOR

Derek Finholt has joined the Jensen Arctic Museum at Western Oregon University as its curator. While completing his master's studies at George Washington University, he worked on projects at the Smithsonian National Museum of Natural History and Alexandria Archaeology Museum, where he gained knowledge of preventive conservation, collections management and museum education. Prior to joining the Jensen Arctic Museum, he owned and operated The Blue Pepper, an art gallery and Internet cafe in Salem.

(Continued on page 10)

Government Relations (continued from page 4)

The Heritage Commission plans to stage several technical workshops in March to assist museums with submitting applications for the new program. Be sure to check the spring issue of Dispatch, as it may be possible to attend a workshop during the OMA meeting in Eugene!

For more information, contact Heritage Commission coordinator Kyle Jansson at 503-986-0673 or 725 Summer St. NE, Suite C, Salem OR 97301-1266.

WHAT YOU CAN DO AT THE LOCAL LEVEL

In every issue of the Dispatch, we encourage you to contact state and national politicians from your area and remind them about what your museum contributes to state and local resources. If you are unsure whom to contact for your area, visit www.Oregon.gov (or your local library), where you will find names, addresses, telephone numbers, and email addresses. If you are interested in obtaining an Oregon Museums Fact Sheet to share with your legislator and others in your community, please contact Katherine Huit at 503.434.4123 or katherine.huit@sprucegoose.org.

Resources and Training

ANTHROPOLOGY CONFERENCE SCHEDULED FOR MARCH

The organizers of the 2006 Northwest Anthropological Conference are seeking proposals for symposia, panels, other thematic sessions, and workshops on all aspects of Pacific Northwest anthropology. The conference is scheduled to take place March 29-April 1 in Seattle.

The theme of the 59th annual conference is "Beyond Description: From Data to Understanding." Visit http://www.washington.edu/burkemuseum/nwac/nwac_index.htm or contact Laura S. Phillips at the Burke Museum of Natural History and Culture (206-685-3849 or archy@u.washington.edu) to learn more.

MULKEY CEMETERY ESTABLISHES NEW WEBSITE

The Mulkey Cemetery Association has debuted its new web site at <http://www.mulkeycemetery.org>. The site features information about Eugene's historic Mulkey Cemetery, including a historical overview, driving directions and map to the cemetery, and a complete list of interments.

The Mulkey Cemetery, located on a hilltop in a quiet residential neighborhood, has been described as "Eugene's best secret garden." The cemetery's peaceful setting is enhanced by native and heritage plants, which are particularly lovely in the spring. Burials have taken place at the cemetery continuously since the early 1860s. The cemetery is managed by the nonprofit Mulkey Cemetery Association. To learn more about the cemetery, or for information about Association meetings and events, visit the web site or e-mail administrator@mulkeycemetery.org.

TRAVEL GRANTS AVAILABLE TO SMALL MUSEUM ADMINISTRATORS

The Small Museum Administrators' Committee is offering four \$500 scholarships to assist in underwriting the costs to attend the 2006 American Association of Museums annual meeting scheduled for April 27-May in Boston. Applicants must be current SMAC members through AAM and be employed in a museum with a budget under \$350,000. Only one applicant per museum per year is eligible. The application deadline is Jan. 13.

For more information, contact Lisa Tremper Hanover, Director, Philip and Muriel Berman Museum of Art, Ursinus College, PO Box 1000, Collegeville, PA 19426.

MUSEUM ASSESSMENT GRANT APPLICATIONS AVAILABLE

Applications for the Museum Assessment Program are now available at www.aam-us.org/museumresources/map/apply_howto.cfm. Although applications are due by February 15, applicants will be accepted into the program on a first-come, first-served basis. The Museum Assessment Program is an assessment tool that can help a museum attain excellence in operations and planning through a confidential process of self-study and peer review.

Under a new cooperative agreement with the Institute of Museum and Library Services, the American Association of Museums has streamlined the program, making it more accessible to the field. Museums must be open 90 days a year to be eligible, and museums with budgets under \$125,000 can now participate for free. AAM covers all surveyor travel costs (up to \$850) and participants receive a \$150 resource packet from the AAM bookstore at the completion of their assessment.

ADVERTISE IN THE DISPATCH!

OMA members are invited to purchase advertising space in the *Dispatch*. Contact Richard Engeman for a price sheet at PO Box 1718, Portland Oregon 97207 or email richarde@OHS.org.

For more information, or to request a hard copy of the application, call 202/289-9118 or e-mail map@aam-us.org.

NEH OFFERS CENTRAL GRANT SITE

The National Endowment for the Humanities offers a variety of grant programs for heritage, history and education organizations. For a complete listing of the grant programs, deadlines, and requirements, visit <http://www.neh.gov/grants/>.

CULTURAL TRUST MATERIALS AVAILABLE ONLINE

The Oregon Cultural Trust has its communication and marketing materials available online for organizations that wish to use them. The materials include advertisements in a variety of sizes, a newsletter ad, its brochures, logo and other materials. Just go to the Cultural Trust's website at www.culturaltrust.org and click on "toolkits and reference materials." For additional information, contact the Trust at cultural.trust@state.or.us

NPS ANNOUNCES COST-SHARE OPPORTUNITY

The National Park Service announces the 2006 Challenge Cost Share program for the Lewis and Clark National Historic Trail. The program will distribute matching funds to non-federal organizations for projects that educate the public about the Lewis and Clark story and preserve the resources of the National Historic Trail, including projects that commemorate the bicentennial of the historic expedition.

"This year we are looking for projects that will provide a lasting legacy of resource protection, education and interpretation on the Lewis and Clark National Historic Trail for many years

following the bicentennial" said Richard Williams, NPS chief of resource management. "However, we also expect a number of organizations will apply for funds to assist in production of events and activities in 2006, the last year of the bicentennial."

Local communities, states, Indian Tribes and non profit organizations are encouraged to apply for the Lewis and Clark Challenge Cost Share funds. Application information may be obtained at the Internet Web site www.nps.gov/lecl or from Richard Williams, Chief, Resource Management, 402-661-1830, toll free 888-237-3252, or richard_williams@nps.gov.

On-line applications must be submitted by Jan. 20.



Position Openings

DOCUMENTATION PROGRAM SEEKS SUMMER RESEARCHERS

The Heritage Documentation Programs (Historic American Buildings Survey/Historic American Engineering Record/Historic American Landscapes Survey), a division of the National Park Service, seeks applications from individuals for summer employment documenting historic sites and structures of architectural, landscape and technological significance. Duties involve on-site field work and preparation of measured and interpretive drawings and written historical reports for the for the Library of Congress. Projects last 12 weeks, beginning in May/June.

Applications are due Feb. 13. Application forms and detailed information can be found at: <http://www.cr.nps.gov/hdp/jobs>

SUMMER TEACHING FELLOWSHIPS OFFERED

The Gilder Lehrman Institute of American History will host 21 weeklong seminars in summer 2006 for high school and middle school teachers. A complete list of topics, dates, locations, and application forms is available online at <http://www.gilderlehrman.org/teachers/seminars1.html>.



Seminars are tuition-free, and participants receive a \$500 stipend, books, and room and board. Seminars on major topics in American history are led by eminent historians. Applications must be submitted by Feb. 1. Limited to 30 participants per seminar by competitive application. Preference given to new applicants. E-mail seminars@gilderlehrman.org or call 646-366-9666 with any questions.

ARCHIVIST SOUGHT

The Oregon Historical Society Research Library is seeking an archivist to process and catalogue archival materials. This is a permanent, full-time position. For a full job description visit <http://www.ohs.org/news/current-openings.cfm> or send e-mail inquiries to jonij@ohs.org. Application review begins January 15, 2006. Please send letter of application; full current resume; and names, addresses and a telephone number of three references to: (JOB TITLE OF APPLICATION), Director of Human Resources, Oregon Historical Society, 1200 SW Park Avenue, Portland, OR 97205.

Spring Meeting Preview

OMA TO MEET IN EUGENE

The Spring Meeting of the Oregon Museums Association will feature discussions about libraries and archives, online auctioning and the opportunity to explore the Jordan Schnitzer Museum of Art at the University of Oregon. Held in Eugene, meeting sponsors include the Lane County Historical Society and Museum, and the University of Oregon's Jordan Schnitzer Museum of Art and Museum of Natural and Cultural History.

RESERVE THE DATES!

MARCH 6 AND 7, 2006



COLLECTIONS CURATOR SOUGHT BY HALLIE FORD MUSEUM

The Hallie Ford Museum of Art at Willamette University in Salem, Oregon, with diverse collections of European, Asian, Native American, and regional art and a dynamic schedule of temporary exhibitions, seeks an experienced individual to oversee the proper care, storage, preservation, and security of the University's art collection and related archives. Responsible for records related to collections, archives, and exhibitions, including acquisitions, donations, loans, and insurance. Requirements include an MA, MS, or MFA degree in art, art history, museology, or related field, with additional training in archives and record management; two years of collection-related and/or registration experience; knowledge of curatorial, registrarial, conservation, and ethical practices and procedures; computer skills; and familiarity with NAGPRA. Permanent, full-time appointment (40 hours per week). Competitive salary, plus excellent fringe benefits. Position closes February 24, 2006. Send cover letter, resume, and three references to Search Committee / Collection Curator, Human Resources Department, Willamette University, 900 State Street, Salem, OR 97301.

Events and Exhibits

LATIMER QUILT & TEXTILE CENTER, TILLAMOOK

If you love quilts, you won't want to miss the Book Club Quilters' presentation of a collection of quilts inspired by the book *The Whale Rider* at the Latimer Quilt & Textile Center in Tillamook. The exhibit, Cover to Cover, will remain on display through January 1, 2006.

Instead of charging admission to the exhibit, Latimer Quilt & Textile Center is asking for non perishable food items for the food bank. So, in the spirit of helping people and giving back to the community, visit this unique museum. For further information call 503 842-8622 or email latimertextile@oregoncoast.com

PORTLAND ART MUSEUM, PORTLAND

The Portland Art Museum unveiled *Out of the Darkness: Contemporary Mezzotints*, on December 17, celebrating the intricate and rarely exhibited medium of mezzotint, a challenging and labor-intensive method of printmaking. This exhibition is one of only a handful in the last 25 years in the United States to focus on the medium. *Out of the Darkness: Contemporary Mezzotints* will provide an exceptional chance to see why this specialized technique has enjoyed a recent re-emergence throughout Europe, America, and Japan, and provide the viewer with a visual guide to the laborious process involved in creating these remarkable works on paper.

"Viewers to the exhibition will be delighted by the diversity of subject and composition in the prints, and awestruck by the artists' mastery of technique. The exhibition is a great chance to view a rarely displayed printmaking technique," said exhibition curator J.C. Schlechter. *Out of the Darkness: Contemporary Mezzotints* runs through March 12, 2006. For further information call 503-226-2811 or visit www.portlandartmuseum.org.

OMSI, PORTLAND

Enjoy the IMAX Experience, at OMSI's OMNIMAX® this winter! *Polar Express* runs through January. 5, 2006. This holiday-themed film, based on the classic Caldecott medal-winning children's book written by Chris Van Allsburg, is directed by Oscar winner Robert Zemeckis and stars two-time Academy Award winner Tom Hanks.

Join Clara and the Nutcracker on their fanciful journey to an enchanted kingdom in *Laser Nutcraker*, which runs through January 1, 2006.

The BIG Shorts OMNIMAX® Animation Film Festival opens January 6, 2006: Five animated films created especially for IMAX have been combined into a unique 32-minute experience of amazing sights and sounds. The films range in style from the exquisite hand-drawn images of *The Old Man and the Sea* to the experimental fractile images of Arthur C. Clark's *Search for Infinity*. Other titles include, IMAX® *Slit-Scan*, *Primiti-Too-Taa*, and *Where the Trains Used to Go*.

If you like animation, be sure not to miss the Northwest Animation Showcase, which features Portland's own world-class animation scene and runs from January 14-15, 2006. View animated shorts created by local artists, see a variety of unique artifacts including sets, storyboards and cels, and view hands-on demos by local experts. Don't miss this interactive celebration of the best in Northwest animation!

For further information call 503.797.4640 or visit <http://www.omsi.edu/visit/omnimax>.

THE OREGON JEWISH MUSEUM, PORTLAND

Jews@Work: 150 Years of Commerce and Industry in Oregon opened recently at the Oregon Jewish Museum. Second in an exhibit series, this display travels from 1922 to the present, and, through the eyes of Jewish businessmen and women, chronicles the possibilities and limitations of making a living in Oregon. For further information call (503) 226-3600 or visit <http://www.ojm.org/>.

THE ARCHITECTURAL HERITAGE CENTER, PORTLAND

Corbin Hardware: Good Buildings Deserve Good Hardware, which highlights a major manufacturer of building hardware and locks, is currently on exhibit at The Architectural Heritage Center. The exhibit shows the manufacturer's expansion, during the latter half of the 19th century, into coffin handles, knobs and stove handles. For more information about the exhibit or the Heritage Center call (503) 231-7264 or visit <http://www.architecturalheritagecenter.org>.

THE OREGON NIKKEI LEGACY CENTER

Opening its new exhibit, *Many Faces of Loyalty*, The Oregon Nikkei Legacy Center tells the story of Japanese Americans who have served their country with honor. The exhibit, which features photographs and other items gathered from veterans, runs through January 8, 2006. Group visits are welcome by appointment. For further information call 503-224-1458.

CORPS II CONTINUES ITS OREGON TOUR AT ST. HELENS

The National Park Service traveling exhibition Corps of Discovery II: 200 Years to the Future will continue its Oregon tour at the Waterfront in St. Helens from March 13-20, 2006. Frequently called Corps II, the exhibit is a joint effort of federal and state agencies, private and nonprofit organizations, and American Indian tribes.

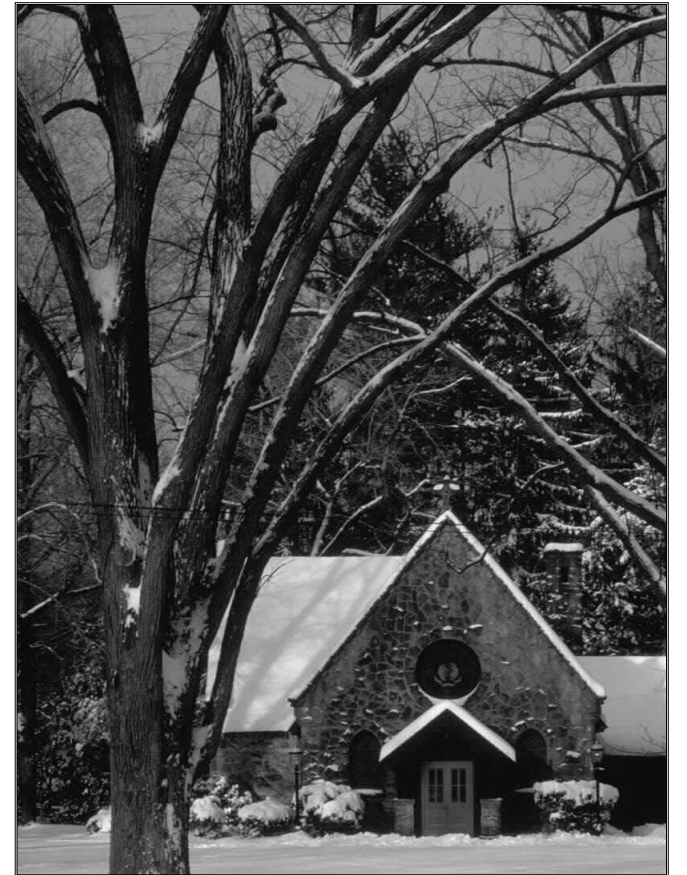
The central feature of Corps of Discovery II is the Tent of Many Voices. This 150-seat auditorium is a venue for cultural arts demonstrations, folklore, music, living history presentations, readings from the expedition journals and more. Programs reflect a spectrum of nature, culture, and history topics. The Tent of Many Voices schedule in St. Helens is available online at <http://www.lcbo.net/corps.html>

In addition to a walk-through exhibit, Corps of Discovery II has a 25-foot keelboat replica, a 16-foot diameter Plains Indian lodge, an explorer camp complete with a 25-foot dugout canoe, and living history actors. Corps II is largely staffed by the

National Park Service but involves more than two dozen federal agencies, 41 Indian nations, 18 Lewis and Clark Trail state commissions, dozens of state and local agencies, non-profit groups and thousands of individual volunteers.

Following its St. Helens visit, Corps II will stop next in Oregon at Grand Ronde at the Grand Ronde Reservation. Other Oregon visits include:

Mar 13-20 St. Helens, Waterfront
Mar 25-Apr 2 Grand Ronde, Grand Ronde Reservation



For further information on the Corps II's travelling schedule in the Pacific Northwest, visit <http://www.lcbo.net/corps.html>.

OHS PREPARING FOR NATIONAL EXHIBIT

On exhibit through March 2006 at the Oregon Historical Society is the largest collection of Lewis and Clark Expedition artifacts, artwork and documents of the past 200 years. Artifacts, artwork, and documents entrusted to the Missouri Historical Society by the Clark and Lewis families in the early 20th century form the core of this once-in-a-lifetime exhibition. Period objects and art represent the equipment the explorers used, the landscapes they saw, and the Native American tribes they met. More than 600 artifacts illustrate cultural encounters along the journey of Lewis and Clark.

This exhibit features the collections of the Missouri Historical Society's augmented by objects from other institutions with significant Lewis and Clark and ethnographic holdings, including the Oregon Historical Society (OHS). Other institutions include the American Philosophical Society, the Academy of Natural Sciences of Philadelphia, the Peabody Museum of Archaeology and Ethnology, the Smithsonian Institution, the Beinecke Rare Book and Manuscripts Library, the Library of Congress, and the National Archives.

OHS is the only museum on the West Coast to host this unique exhibition. In anticipation of large crowds, OHS is using a timed-ticket system. Tickets and other information about the exhibit, programs and related exhibits are available at <http://www.ohs.org/Lewis-and-Clark-and-OHS.cfm>. (continued on page 10)